

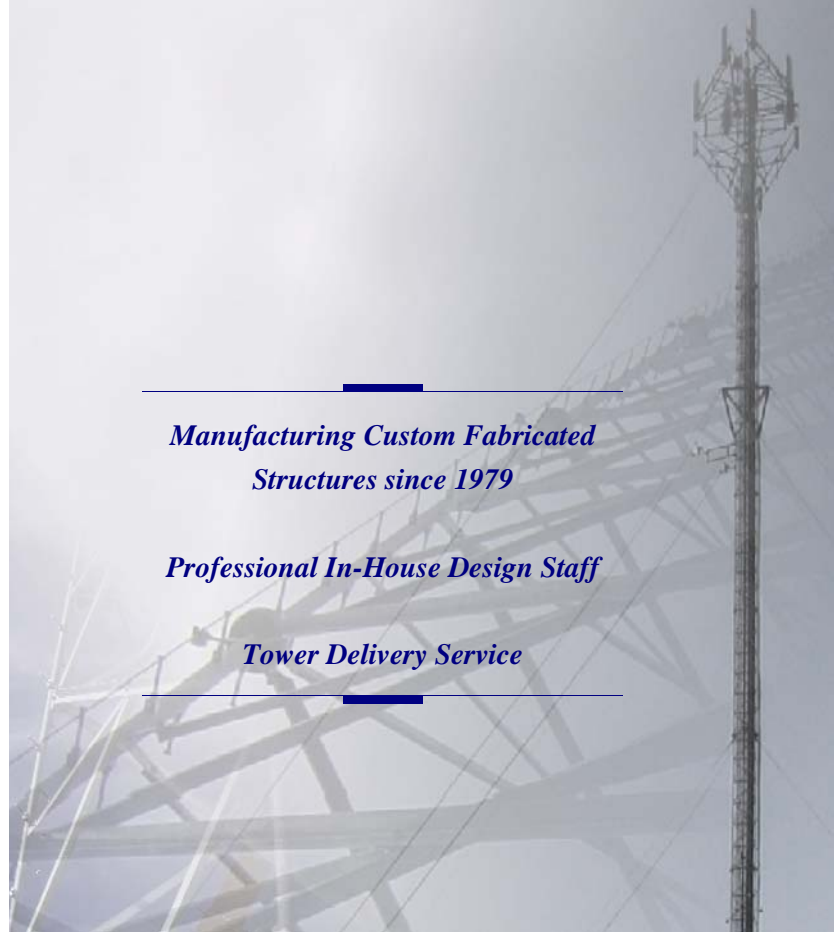


**WORLD TOWER**  
COMPANY, INC.

1213 Compressor Drive  
P.O. Box 508  
Mayfield, KY 42066

Phone: 270-247-3642  
Fax: 270-247-0909

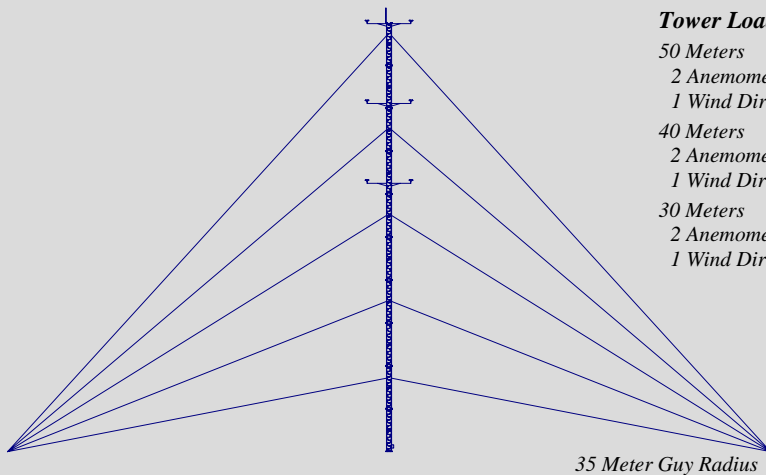
[WWW.WORLDTOWER.COM](http://WWW.WORLDTOWER.COM)



*Manufacturing Custom Fabricated  
Structures since 1979*

*Professional In-House Design Staff*

*Tower Delivery Service*



**Tower Loading**

- 50 Meters  
2 Anemometers  
1 Wind Direction
- 40 Meters  
2 Anemometers  
1 Wind Direction
- 30 Meters  
2 Anemometers  
1 Wind Direction

**ADVANTAGES OVER TILT UP TUBE  
DESIGN CONSTRUCTION:**

- Lower Cost
- Additional Capacity for Wind, Ice, and Loading
- Reduced Maintenance Cost Due to the Tube Designs Incapability to Climb the Tower
- Reduced Number of Guy Wires and Anchor Points to Install
- Integral Climbing Ladder and Waveguide

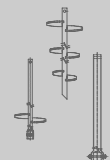
**KIT INCLUDES**



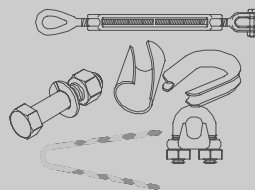
**20' Tower Sections**  
250 Lbs. (Pipe)



**Guy Wire**  
1/4" / 5/16" / 3/8"

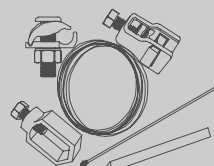


**Screw in Anchor System**  
Foundation & Guy



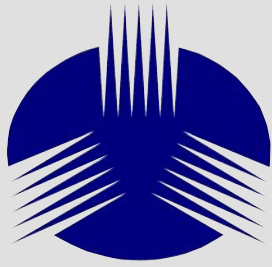
**Tower Assembly Hardware**

Turnbuckles / End Sleeves / Connection Hardware / Thimbles / Pre Forms / Cable Clamps



**Grounding and Lightning Protection**

Ground Rod / Rod Clamp / Grounding Wire / Base Ground Clamp / Guy Wire Grounding Clamp / Lightning Rod



**WORLD TOWER**  
COMPANY, INC.

1213 Compressor Drive  
P.O. Box 508  
Mayfield, KY 42066

Phone: 270-247-3642  
Fax: 270-247-0909

[WWW.WORLDTOWER.COM](http://WWW.WORLDTOWER.COM)

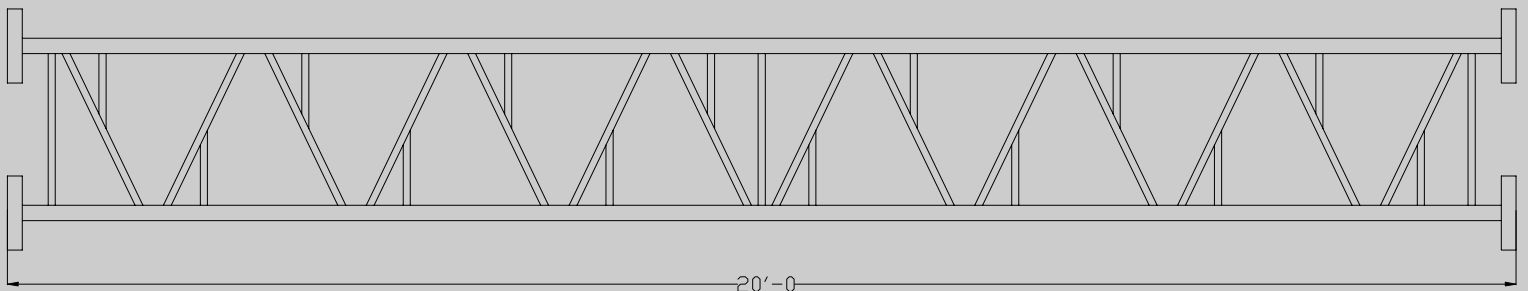
**TOWER SECTION DETAILS:**

- *Uniform Cross Section (UCS)*
- *All Welded Cross Members for quicker Assembly*
- *True 18" Face Measured from Center of each Leg*
- *Integral Climbing Ladder and Waveguide*
- *Welded Guy Wire Attachments*
- *Anchor Head Attaches to Screw in Anchor*
- *Lightweight Tower Sections*

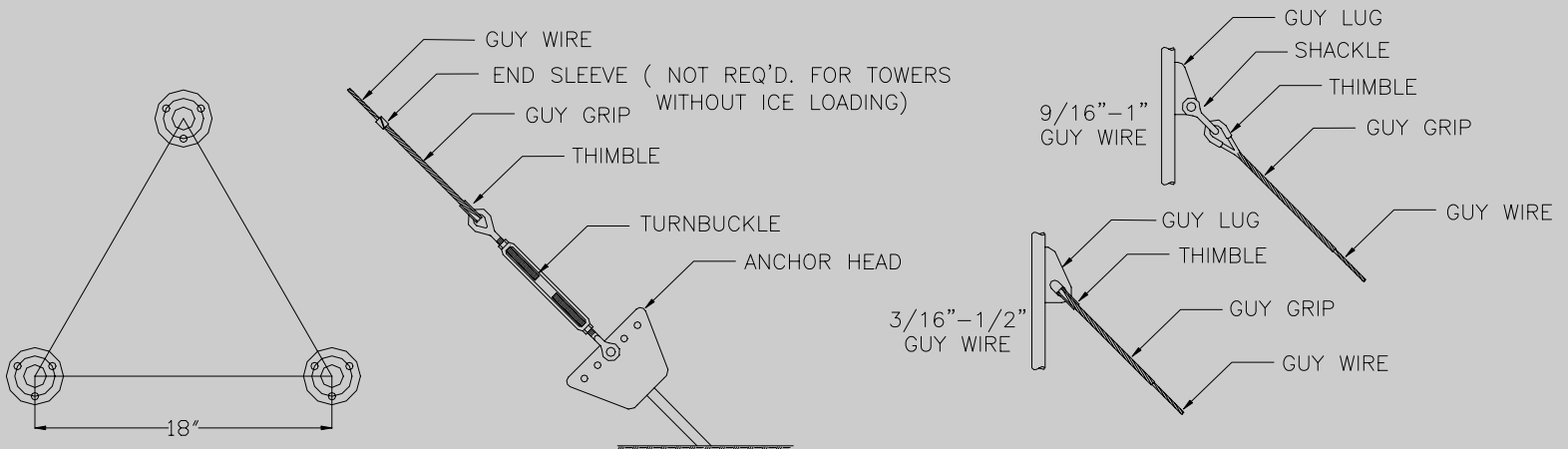
**Contacts**

[David@worldtower.com](mailto:David@worldtower.com)

[Brent@worldtower.com](mailto:Brent@worldtower.com)



SECTION ELEVATION



SECTION PLAN

ANCHOR ASSEMBLY

GUY WIRE ATTACHMENT